

Diode Presspack stack

| Electrical Characteristics |  |   |     |       |     |          |
|----------------------------|--|---|-----|-------|-----|----------|
| Symbol                     | Conditions                                       |   | min | typ   | max | Unit     |
| Electrical Data            |  |   |     |       |     |          |
| $I_D$                      | Maximum DC current                               | $T_{AMBIENT} = 35^{\circ}C$ ; No overload |     | 1 950 |     | A        |
| $V_{AC}$                   | Maximum AC voltage (+/-10%)                      |   |     | 500   |     | $V_{AC}$ |
| $V_{BUS}$                  | DC Bus voltage                                   |   |     | 670   |     | $V_{DC}$ |
| $P_{TOTAL}$                | Maximum stack power                              |   |     | 1 305 |     | kW       |
| $P_{LOSS}$                 | Stack power loss ( $T_{AMBIENT} = 35^{\circ}C$ ) |   |     |       |     | W        |

| Environmental Data |   |  |     |                    |       |      |
|--------------------|---|--|-----|--------------------|-------|------|
| Symbol             | Conditions                                |  | min | typ                | max   | Unit |
| Mechanical Data    |   |  |     |                    |       |      |
| Drawing            | SEMIKRON document number.revision.version |  |     | <b>11110436.01</b> |       | -    |
| Weight             | Approximate total weight                  |  |     | 56.2               |       | kg   |
| Altitude           | Installation altitude without derating    |  |     |                    | 1 000 | m    |
| Protection         | IEC 60529                                 |  |     | IP00               |       | -    |
| Pollution degree   | EN 50178                                  |  |     | 2                  |       | -    |

| Fan Data  |                           |  |     |                       |     |          |
|-----------|---------------------------|--|-----|-----------------------|-----|----------|
| Symbol    | Conditions                |  | min | typ                   | max | Unit     |
| Fan Data  |                           |  |     |                       |     |          |
| Type      | SEMIKRON fan designation  |  |     | <b>SKF 17A-230-11</b> |     | -        |
| $V_{FAN}$ | Fan voltage               |  |     | 230                   |     | $V_{AC}$ |
| $f_{FAN}$ | Fan frequency             |  |     | 50/60                 |     | Hz       |
| $I_{FAN}$ | Fan maximum input current |  |     | 0.36/0.51             |     | A        |
| $P_{FAN}$ | Fan power                 |  |     | 81/115                |     | W        |

| Stack Protection |                                      |  |     |      |     |         |
|------------------|--------------------------------------|--|-----|------|-----|---------|
| Symbol           | Conditions                           |  | min | typ  | max | Unit    |
| RC Circuit       |                                      |  |     |      |     |         |
| Type             | RC in parallel with bridge rectifier |  |     | -    |     | -       |
| R                | Resistance (80W)                     |  |     | 33   |     | Ohm     |
| C                |                                      |  |     | 0.47 |     | $\mu F$ |

| Fuses       |  |  |     |           |       |         |
|-------------|--|--|-----|-----------|-------|---------|
| Symbol      | Conditions   |  | min | typ       | max   | Unit    |
| Fuses       |  |  |     |           |       |         |
| Size        | 1 fuse per switch, with microswitches                  |  |     | <b>33</b> |       | -       |
| $I_{N RMS}$ | Caliber  |  |     | 1 400     |       | A       |
| $U_N$       | Nominal voltage (IEC)                                  |  |     | 690       |       | V       |
| $I^2t$      | Total at $U_N$ at room temperature (approx. 20...25°C) |  |     |           | 2 625 | $kA^2s$ |

| Bimetal Thermal Trip |   |  |     |     |     |             |
|----------------------|---|--|-----|-----|-----|-------------|
| Symbol               | Conditions  |  | min | typ | max | Unit        |
| Bimetal Thermal Trip |   |  |     |     |     |             |
| $T_S$                | Switching temperature over which thermal trip is open |  |     | 135 |     | $^{\circ}C$ |
| $I_{TC MAX}$         | Maximum permissible current                           |  |     | 1   |     | A           |
|                      |   |  |     | 3   |     | A           |

## SEMISTACK® CLASSICS - B6U

Three phase uncontrolled rectifier

### Preliminary Data

Ordering No. 08785105  
Description SKS 1950F B6U 1305 V16 ZU

### Features

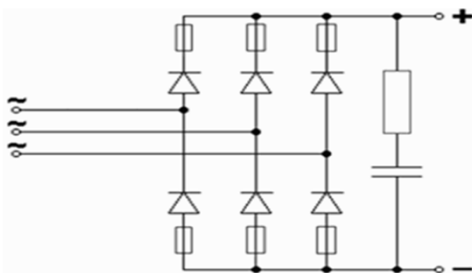
- Non-isolated power stacks
- SKN 1500/16
- Heatsink P17/130
- Forced air cooling
- RC circuit included
- Fuses with microswitches
- Thermal trip included

### Typical Applications

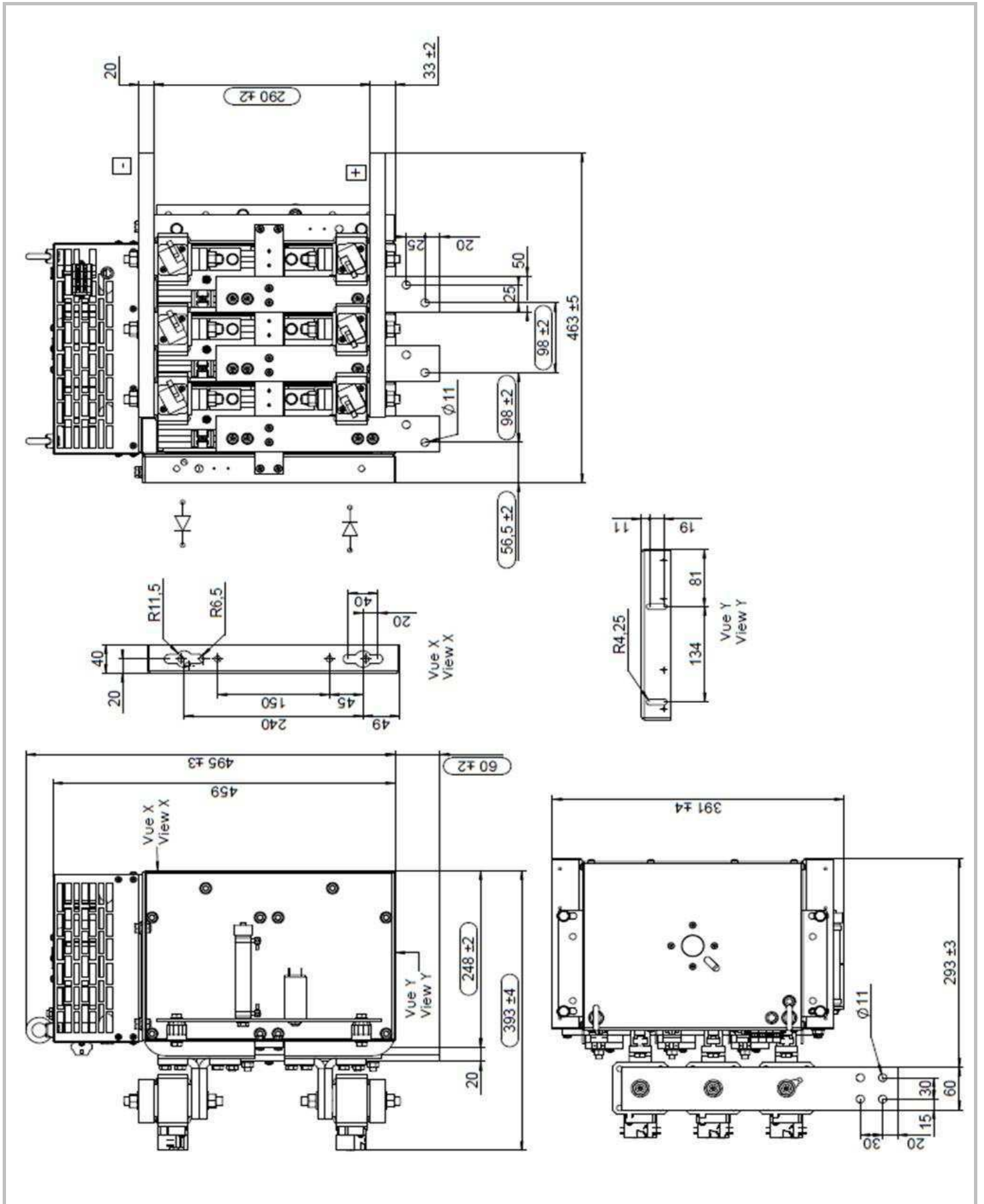
- Power supplies
- Rectifier for AC/DC motor control

### Remarks

This technical information specifies semiconductor devices but promises no characteristics. No warranty or guarantee, expressed or implied, is made regarding delivery, performance or suitability.



B6U



Dimensions

This technical information specifies semiconductor devices but promises no characteristics. No warranty or guarantee expressed or implied is made regarding delivery, performance or suitability.