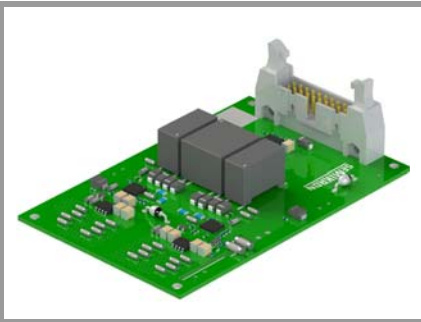


SKYPER 12 press-fit C 600A



SKYPER®

Plug & Play Driver Board for SEMiX603GB12E4p

Order Number
L5066903 – Driver
27895000 – Module

SKYPER 12 press-fit C 600A

Features

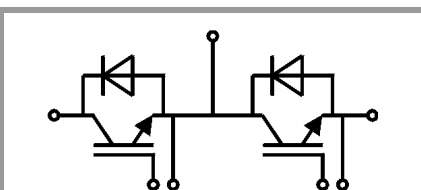
- Dynamic short circuit detection with SoftOff
- Undervoltage lockout on primary side and secondary side
- Internal power supply
- ROHS, UL recognized

Typical Applications*

- Solar inverters
- Power supplies
- Motor drives

Remarks

- All data refer to $T_{op} = +25^{\circ}\text{C}$ and $V_S = V_{S(typ)}$ unless otherwise specified
- Environmental conditions please see technical explanation

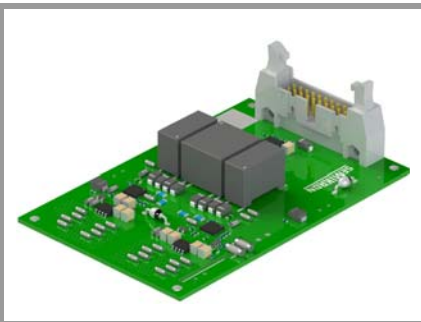


Two channel driver

Absolute Maximum Ratings			
Symbol	Conditions	Values	Unit
V_S	Supply voltage primary side	15.7	V
V_{IH}	Input signal voltage (HIGH)	$V_S + 0.4$	V
V_{IL}	Input signal voltage (LOW)	$\text{GND} - 0.4$	V
f_{max}	Maximum switching frequency ¹⁾	15	kHz
V_{CE}	Collector emitter voltage ²⁾	1200	V
V_{DC}	DC-Link voltage ³⁾	800	V
dv/dt	Rate of rise and fall of voltage secondary to primary side	50	kV/ μs
V_{isol}	Insulation test voltage ⁴⁾	4000	V
T_{op}	Operating temperature	-40 ... 85	$^{\circ}\text{C}$
T_{stg}	Storage temperature	-40 ... 85	$^{\circ}\text{C}$

Characteristics					
Symbol	Conditions	min.	typ.	max.	Unit
V_S	Supply voltage primary side	14.4	15	15.6	V
$V_{UVLO(prim)}$	Undervoltage lockout primary side	12.2		13.9	V
$V_{UVLO(secP)}$	Undervoltage lockout secondary side, positive voltage	9.4			V
$V_{UVLO(secN)}$	Undervoltage lockout secondary side, negative voltage	-5.8		-4.1	V
$I_{S(idle)}$	Supply current primary side (no load)		120		mA
$I_{S(max)}$	Supply current primary side (full load)			450	mA
V_I	Input signal voltage on/off		$V_S/0$		V
$R_{IN(sw)}$	Input resistance (switching signals)		33		k Ω
$C_{IN(sw)}$	Input capacitance (switching signals)		1		nF
$V_{G(on)}$	Turn-on output voltage		15		V
$V_{G(off)}$	Turn-off output voltage		-11.3		V
$t_{d(on)}$	Turn-on propagation delay time		1		μs
$t_{d(off)}$	Turn-off propagation delay time		1		μs
$R_{IN(err)}$	Input resistance (error input)		150		k Ω
$C_{IN(err)}$	Input capacitance (error input)		10		nF
$t_{d(err)}$	Error propagation delay time ⁵⁾		0.6		μs
$t_{d(err,ext)}$	External error propagation delay time ⁶⁾		0.6		μs
t_{IDT}	Interlock dead time ⁷⁾		2		μs
t_{jitter}	Signal transfer time deviation ⁸⁾		± 12.5		ns
t_{SPS}	Short pulse suppression		0.395		μs
t_{POR}	Power-on reset time		0.15		s
t_{reset}	Error reset time ⁹⁾	0.03			ms
$V_{CE(ref)}$	Reference voltage for V_{CE} -monitoring ¹⁰⁾		8.2		V
$t_{bl(VCE)}$	Blanking time V_{CE} -monitoring ¹¹⁾		5.4		μs
R_{OTLO}	Over temperature lockout ¹²⁾		243		Ω
$R_{G(on)}$	Populated gate resistor for turn-on		1.31		Ω
$R_{G(off)}$	Populated gate resistor for turn-off		10		Ω
$l_{clear(PS)}$	Shortest distance in air, primary side to secondary side	13			mm
$l_{clear(SS)}$	Shortest distance in air, secondary sides	6.1			mm
$l_{clear(TS)}$	Shortest distance in air, temperature sensor pads to secondary side	3.1			mm
$l_{clear(TP)}$	Shortest distance in air, temperature sensor pads to primary side	13			mm

SKYPER 12 press-fit C 600A



SKYPER®

Plug & Play Driver Board for SEMiX603GB12E4p

Order Number
L5066903 – Driver
27895000 – Module

SKYPER 12 press-fit C 600A

Features

- Dynamic short circuit detection with SoftOff
- Undervoltage lockout on primary side and secondary side
- Internal power supply
- ROHS, UL recognized

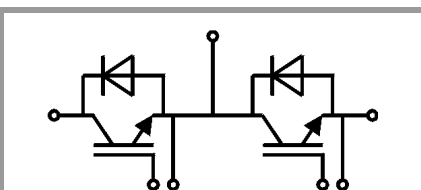
Typical Applications*

- Solar inverters
- Power supplies
- Motor drives

Remarks

- All data refer to $T_{op} = +25^{\circ}\text{C}$ and $V_S = V_{S(typ)}$ unless otherwise specified
- Environmental conditions please see technical explanation

Characteristics					
Symbol	Conditions	min.	typ.	max.	Unit
$l_{creep(PS)}$	Shortest distance along the surface, primary side to secondary side	13			mm
$l_{creep(SS)}$	Shortest distance along the surface, secondary sides	6.1			mm
$l_{creep(TS)}$	Shortest distance along the surface, temperature sensor pads to secondary side	6.1			mm
$l_{creep(TP)}$	Shortest distance along the surface, temperature sensor pads to primary side	13			mm
V_{PDPS}	Partial discharge extinction voltage, primary side to secondary side ¹³⁾	2107			V
V_{PDTP}	Partial discharge extinction voltage, temperature sensor pads to primary side ¹³⁾	2107			V
w	Weight		45		g
MTBF	Mean Time Between Failure ¹⁴⁾		7.5		10^6h



Two channel driver

Footnotes

Footnote	Description
1)	The rated maximum switching frequency is valid for an operating temperature up to 75°C. For operating temperatures above 75°C the limits are specified according to the graph 'Maximum Switching Frequency'.
2)	Voltage class of semiconductor.
3)	The DC-Link voltage is limited due to the specified safe operation area boundaries.
4)	Test Conditions: ACrms, 2s, input to output
5)	Time between the driver detects an error at the secondary side until the primary side reports an error at the interface.
6)	Time between the driver receives an external error signal at the primary side until the driver turns off its outputs at the secondary side.
7)	The interlock dead time prevents the two outputs from being activated simultaneously. The dead time generation starts with each turn-off command at the driver's primary side.
8)	The jitter is defined as the maximum deviation of the switching signal propagation delay time at constant environmental conditions.
9)	Minimum time of the driver in error state.
10)	The driver detects a desaturation event, when one of its outputs is in on-state and the applied voltage at the corresponding V_{CE} -monitoring input exceeds the reference voltage for V_{CE} -monitoring.
11)	Time elapsed when the driver starts the power semiconductor's turn-on process after the V_{CE} -monitoring input has fallen below the reference voltage for V_{CE} -monitoring.
12)	The driver sets both outputs to $V_{G(off)}$, if the ohmic resistance of the applied temperature sensor is less than R_{OTLO} . For proper function of the temperature lockout a NTC temperature sensor has to be used. The temperature sensor of the SEMIKRON's SEMiX 3 press-fit modules has an ohmic resistance of R_{OTLO} at 130°C, typically.
13)	The partial discharge extinction voltage in this data sheet is defined as peak voltage.
14)	Conditions: $T_{op} = 40^{\circ}\text{C}$; full load

SKYPER 12 press-fit C 600A

Signal Connector

PIN	Signal	Function	Specifications
X10:01	reserved		Open pin
X10:02	PWR_GND	Ground potential for power supply and digital inputs	To be connected to ground
X10:03	reserved		Open pin
X10:04	PWR_GND	Ground potential for power supply and digital inputs	To be connected to ground
X10:05	PWR_VS	Driver power supply	Stabilised +15V \pm 4%
X10:06	PWR_GND	Ground potential for power supply and digital inputs	To be connected to ground
X10:07	nERR_IN	Error input	15V logic inverted; 150k Ω /10nF (pull-up) LOW = External error HIGH = No external error
X10:08	PWR_GND	Ground potential for power supply and digital inputs	To be connected to ground
X10:09	nERR_OUT	Error output	Open collector output; max. 18V/15mA (external pull-up resistor needed) LOW = Error HIGH = No error
X10:10	PWR_GND	Ground potential for power supply and digital inputs	To be connected to ground
X10:11	TOP_IN	Switching signal input (TOP)	15V logic; 33k Ω /1nF (pull-down) LOW = TOP switch off HIGH = TOP switch on
X10:12	PWR_GND	Ground potential for power supply and digital inputs	To be connected to ground
X10:13	nERR_OUT	Error output	Open collector output; max. 18V/15mA (external pull-up resistor needed) LOW = Error HIGH = No error
X10:14	PWR_GND	Ground potential for power supply and digital inputs	To be connected to ground
X10:15	BOT_IN	Switching signal input (BOT)	15V logic; 33k Ω /1nF (pull-down) LOW = BOT switch off HIGH = BOT switch on
X10:16	PWR_GND	Ground potential for power supply and digital inputs	To be connected to ground
X10:17	reserved		Open pin
X10:18	PWR_GND	Ground potential for power supply and digital inputs	To be connected to ground
X10:19	reserved		Open pin
X10:20	PWR_GND	Ground potential for power supply and digital inputs	To be connected to ground

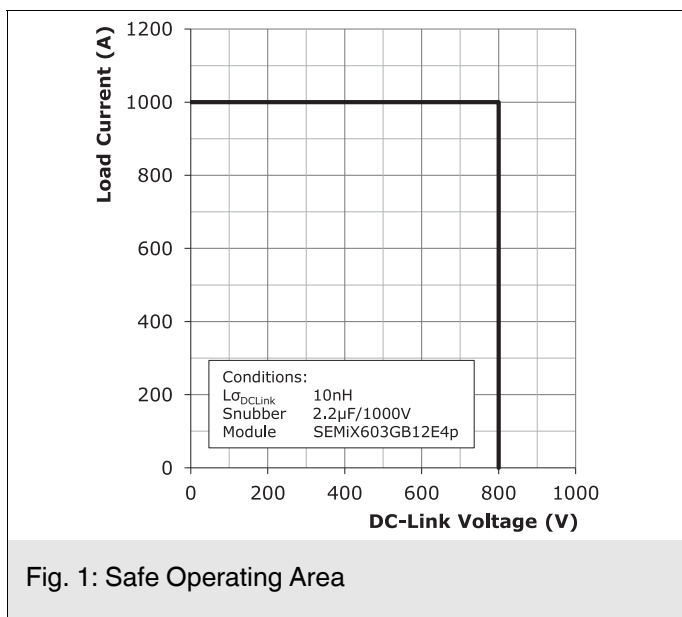


Fig. 1: Safe Operating Area

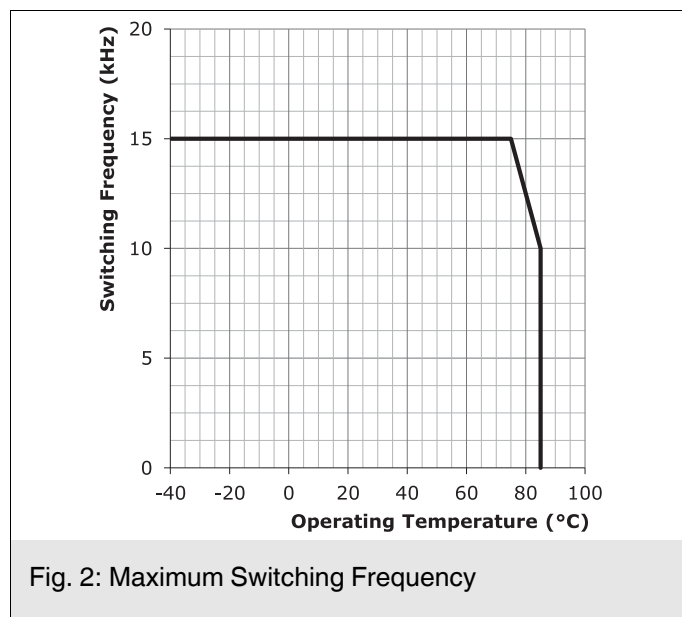


Fig. 2: Maximum Switching Frequency

This is an electrostatic discharge sensitive device (ESDS), international standard IEC 60747-1, chapter IX.

*IMPORTANT INFORMATION AND WARNINGS

The specifications of SEMIKRON products may not be considered as guarantee or assurance of product characteristics ("Beschaffenheitsgarantie"). The specifications of SEMIKRON products describe only the usual characteristics of products to be expected in typical applications, which may still vary depending on the specific application. Therefore, products must be tested for the respective application in advance. Application adjustments may be necessary. The user of SEMIKRON products is responsible for the safety of their applications embedding SEMIKRON products and must take adequate safety measures to prevent the applications from causing a physical injury, fire or other problem if any of SEMIKRON products become faulty. The user is responsible to make sure that the application design is compliant with all applicable laws, regulations, norms and standards. Except as otherwise explicitly approved by SEMIKRON in a written document signed by authorized representatives of SEMIKRON, SEMIKRON products may not be used in any applications where a failure of the product or any consequences of the use thereof can reasonably be expected to result in personal injury. No representation or warranty is given and no liability is assumed with respect to the accuracy, completeness and/or use of any information herein, including without limitation, warranties of non-infringement of intellectual property rights of any third party. SEMIKRON does not assume any liability arising out of the applications or use of any product; neither does it convey any license under its patent rights, copyrights, trade secrets or other intellectual property rights, nor the rights of others. SEMIKRON makes no representation or warranty of non-infringement or alleged non-infringement of intellectual property rights of any third party which may arise from applications. Due to technical requirements our products may contain dangerous substances. For information on the types in question please contact the nearest SEMIKRON sales office. This document supersedes and replaces all information previously supplied and may be superseded by updates. SEMIKRON reserves the right to make changes.