

SEMiX151GD126HDs



SEMiX® 13

Trench IGBT Modules

SEMiX151GD126HDs

Features

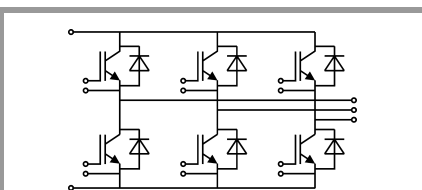
- Homogeneous Si
- Trench = Trenchgate technology
- $V_{CE(sat)}$ with positive temperature coefficient
- High short circuit capability
- UL recognised file no. E63532

Typical Applications*

- AC inverter drives
- UPS
- Electronic Welding

Remarks

- Case temperatur limited to $T_C=125^\circ\text{C}$ max.
- Not for new design



GD

Absolute Maximum Ratings				
Symbol	Conditions		Values	Unit
IGBT				
V_{CES}	$T_j = 25^\circ\text{C}$		1200	V
I_C	$T_j = 150^\circ\text{C}$	$T_c = 25^\circ\text{C}$	168	A
		$T_c = 80^\circ\text{C}$	119	A
I_{Cnom}			100	A
I_{CRM}	$I_{CRM} = 2 \times I_{Cnom}$		200	A
V_{GES}			-20 ... 20	V
t_{psc}	$V_{CC} = 600\text{ V}$	$T_j = 125^\circ\text{C}$	10	μs
	$V_{GE} \leq 20\text{ V}$			
	$V_{CES} \leq 1200\text{ V}$			
T_j			-40 ... 150	$^\circ\text{C}$
Inverse diode				
I_F	$T_j = 150^\circ\text{C}$	$T_c = 25^\circ\text{C}$	152	A
		$T_c = 80^\circ\text{C}$	105	A
I_{Fnom}			100	A
I_{FRM}	$I_{FRM} = 2 \times I_{Fnom}$		200	A
I_{FSM}	$t_p = 10\text{ ms, sin } 180^\circ, T_j = 25^\circ\text{C}$		700	A
T_j			-40 ... 150	$^\circ\text{C}$
Module				
$I_{t(RMS)}$	$T_{terminal} = 80^\circ\text{C}$		600	A
T_{stg}			-40 ... 125	$^\circ\text{C}$
V_{isol}	AC sinus 50Hz, t = 1 min		4000	V

Characteristics						
Symbol	Conditions		min.	typ.	max.	Unit
IGBT						
$V_{CE(sat)}$	$I_C = 100\text{ A}$	$T_j = 25^\circ\text{C}$	1.7	2.10		V
		$T_j = 125^\circ\text{C}$	2.0	2.45		V
V_{CE0}	chipelevel	$T_j = 25^\circ\text{C}$	1	1.2		V
		$T_j = 125^\circ\text{C}$	0.9	1.1		V
r_{CE}	$V_{GE} = 15\text{ V}$	$T_j = 25^\circ\text{C}$	7.0	9.0		$\text{m}\Omega$
		$T_j = 125^\circ\text{C}$	11.0	13.5		$\text{m}\Omega$
$V_{GE(th)}$	$V_{GE}=V_{CE}, I_C = 4\text{ mA}$		5	5.8	6.5	V
I_{CES}	$V_{GE} = 0\text{ V}$	$T_j = 25^\circ\text{C}$			1	mA
		$T_j = 125^\circ\text{C}$				mA
C_{ies}	$V_{CE} = 25\text{ V}$	$f = 1\text{ MHz}$		7.2		nF
C_{oes}		$f = 1\text{ MHz}$		0.38		nF
C_{res}		$f = 1\text{ MHz}$		0.33		nF
Q_G	$V_{GE} = -8\text{ V...} + 15\text{ V}$			800		nC
R_{Gint}	$T_j = 25^\circ\text{C}$			7.50		Ω
$t_{d(on)}$	$V_{CC} = 600\text{ V}$	$T_j = 125^\circ\text{C}$		290		ns
t_r	$I_C = 100\text{ A}$	$T_j = 125^\circ\text{C}$		50		ns
		$V_{GE} = \pm 15\text{ V}$				
E_{on}	$R_{G on} = 1.7\ \Omega$			12		mJ
$t_{d(off)}$	$R_{G off} = 1.7\ \Omega$			605		ns
t_f				110		ns
E_{off}				14		mJ
$R_{th(j-c)}$	per IGBT				0.21	K/W

SEMiX151GD126HDs



SEMiX® 13

Trench IGBT Modules

SEMiX151GD126HDs

Features

- Homogeneous Si
- Trench = Trenchgate technology
- $V_{CE(sat)}$ with positive temperature coefficient
- High short circuit capability
- UL recognised file no. E63532

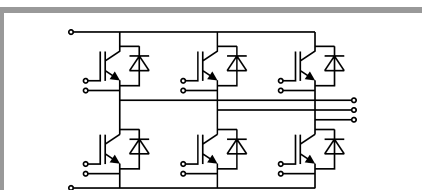
Typical Applications*

- AC inverter drives
- UPS
- Electronic Welding

Remarks

- Case temperatur limited to $T_C=125^\circ\text{C}$ max.
- Not for new design

Characteristics						
Symbol	Conditions		min.	typ.	max.	Unit
Inverse diode						
$V_F = V_{EC}$	$I_F = 100\text{ A}$ $V_{GE} = 0\text{ V}$ chipllevel	$T_j = 25^\circ\text{C}$		1.6	1.80	V
		$T_j = 125^\circ\text{C}$		1.6	1.8	V
V_{F0}	chipllevel	$T_j = 25^\circ\text{C}$	0.9	1	1.1	V
		$T_j = 125^\circ\text{C}$	0.7	0.8	0.9	V
r_F	chipllevel	$T_j = 25^\circ\text{C}$	5.0	6.0	7.0	m Ω
		$T_j = 125^\circ\text{C}$	7.0	8.0	9.0	m Ω
I_{RRM}	$I_F = 100\text{ A}$	$T_j = 125^\circ\text{C}$		125		A
Q_{rr}	$di/dt_{off} = 2900\text{ A}/\mu\text{s}$	$T_j = 125^\circ\text{C}$		26		μC
E_{rr}	$V_{GE} = -15\text{ V}$ $V_{CC} = 600\text{ V}$	$T_j = 125^\circ\text{C}$		11.5		mJ
$R_{th(j-c)}$	per diode				0.36	K/W
Module						
L_{CE}				20		nH
$R_{CC'+EE'}$	res., terminal-chip	$T_C = 25^\circ\text{C}$		0.7		m Ω
		$T_C = 125^\circ\text{C}$		1		m Ω
$R_{th(c-s)}$	per module			0.04		K/W
M_s	to heat sink (M5)		3		5	Nm
M_t		to terminals (M6)	2.5		5	Nm
						Nm
w					350	g
Temperature Sensor						
R_{100}	$T_C=100^\circ\text{C}$ ($R_{25}=5\text{ k}\Omega$)			$493 \pm 5\%$		Ω
$B_{100/125}$	$R(T)=R_{100}\exp[B_{100/125}(1/T-1/T_{100})]$; $T[\text{K}]$;			$3550 \pm 2\%$		K



GD

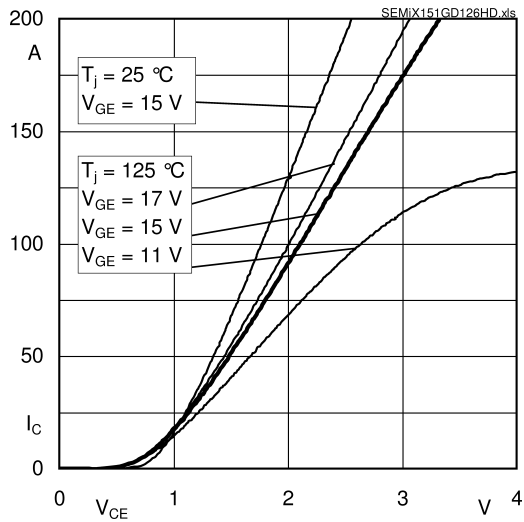


Fig. 1: Typ. output characteristic, inclusive $R_{CC'+EE'}$

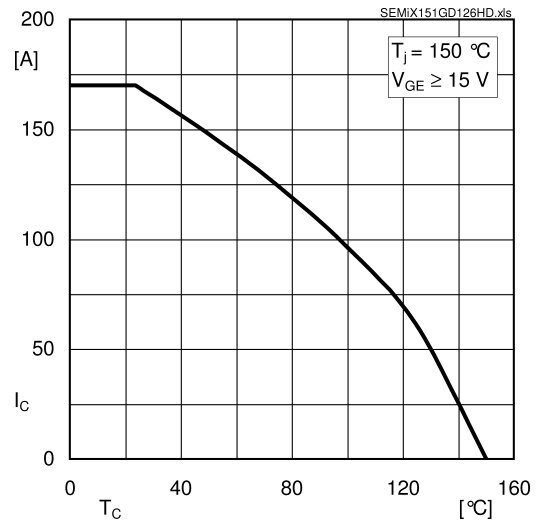


Fig. 2: Rated current vs. temperature $I_C = f(T_C)$

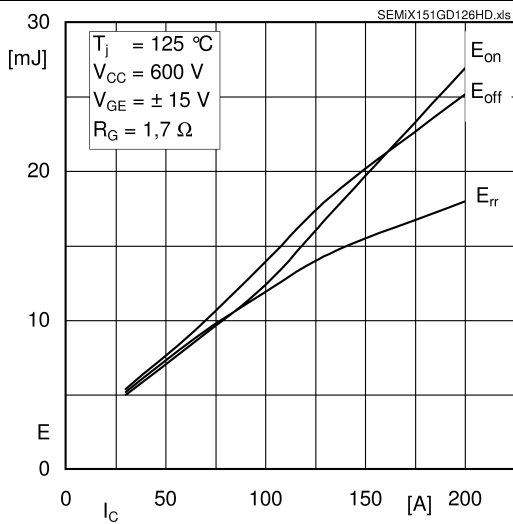


Fig. 3: Typ. turn-on /-off energy = $f(I_C)$

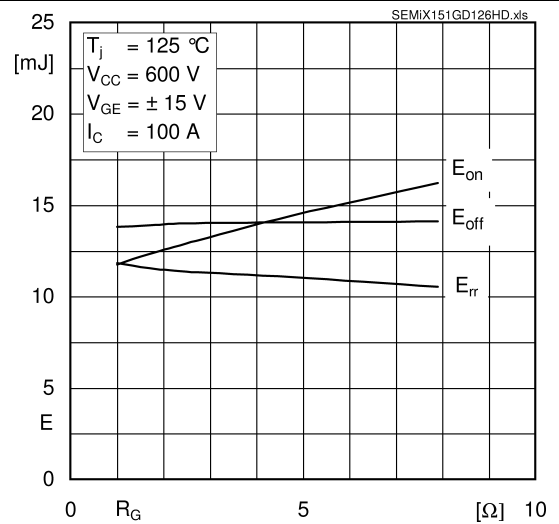


Fig. 4: Typ. turn-on /-off energy = $f(R_G)$

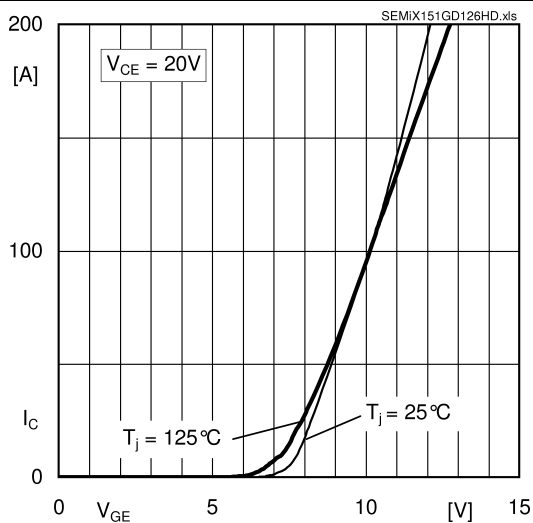


Fig. 5: Typ. transfer characteristic

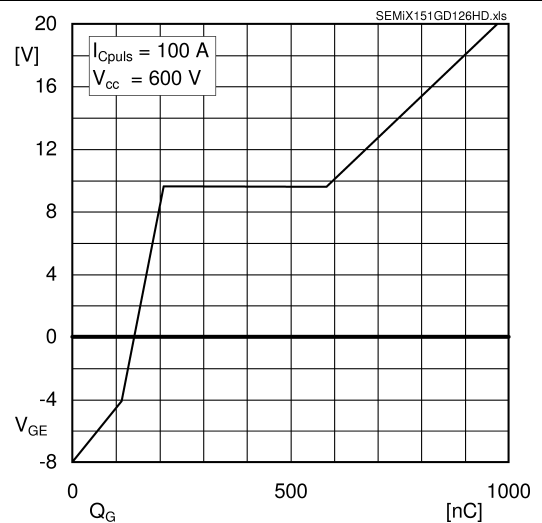


Fig. 6: Typ. gate charge characteristic

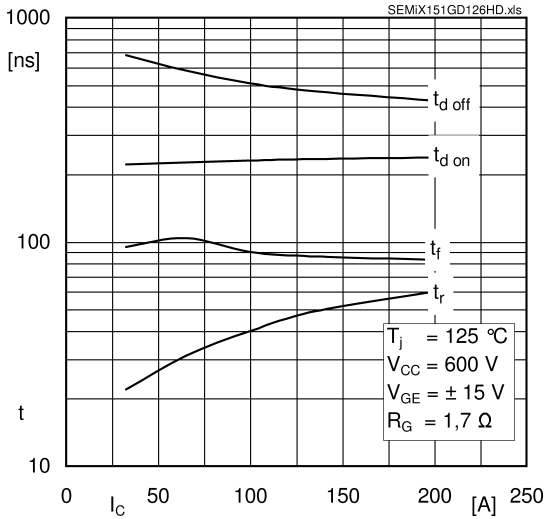


Fig. 7: Typ. switching times vs. I_C

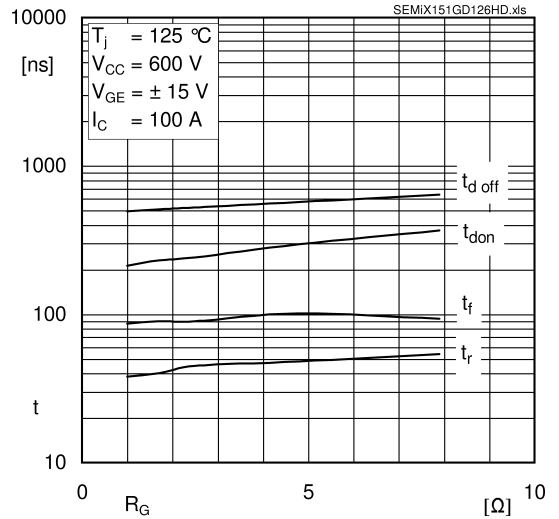


Fig. 8: Typ. switching times vs. gate resistor R_G

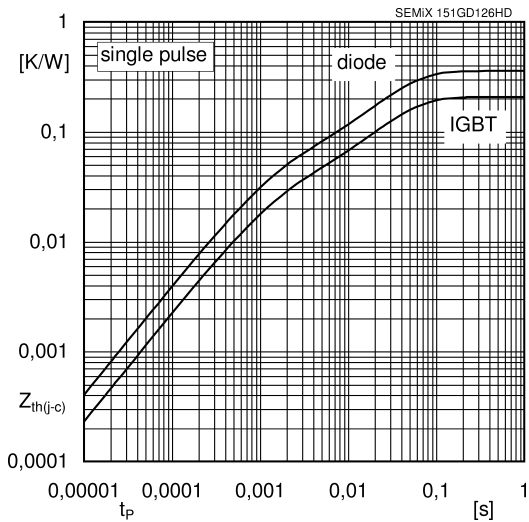


Fig. 9: Typ. transient thermal impedance

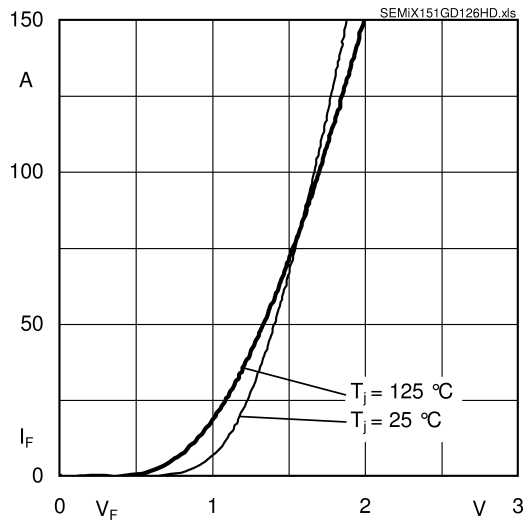


Fig. 10: Typ. CAL diode forward charact., incl. $R_{CC+EE'}$

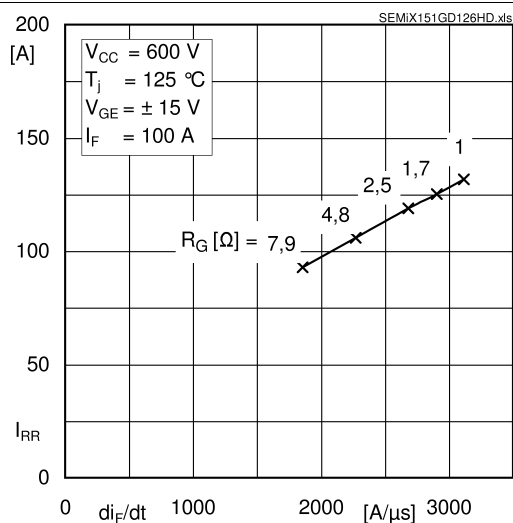


Fig. 11: Typ. CAL diode peak reverse recovery current

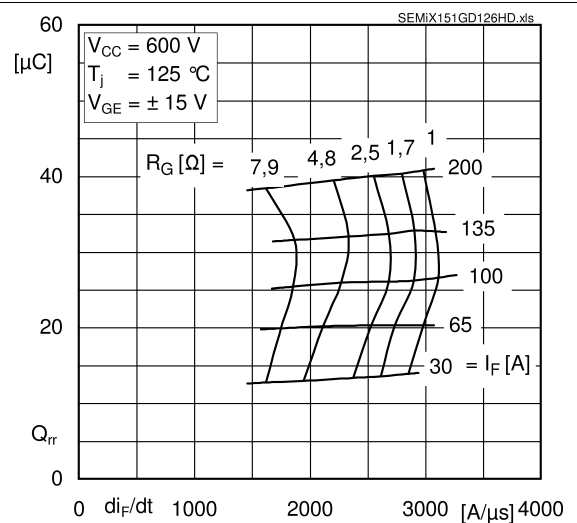
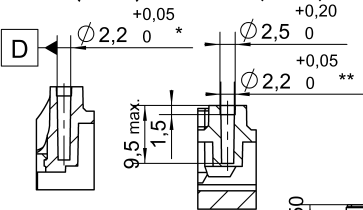


Fig. 12: Typ. CAL diode recovery charge

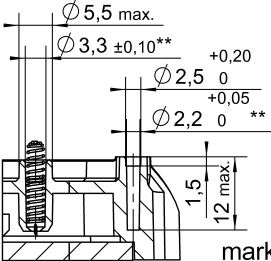
SEMiX151GD126HDs

Case: SEMiX 13

screw duct (left top) : F-F (1:1)
 screw duct (3x centre) : H-H (1:1)

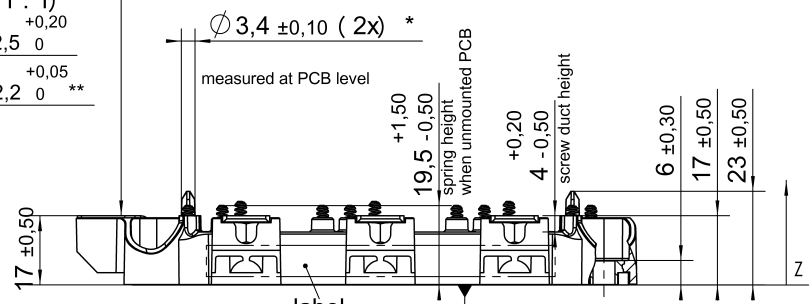


screw duct (4x) : G-G (1:1)
 spring duct (15x) :

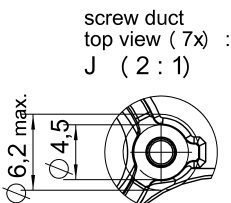
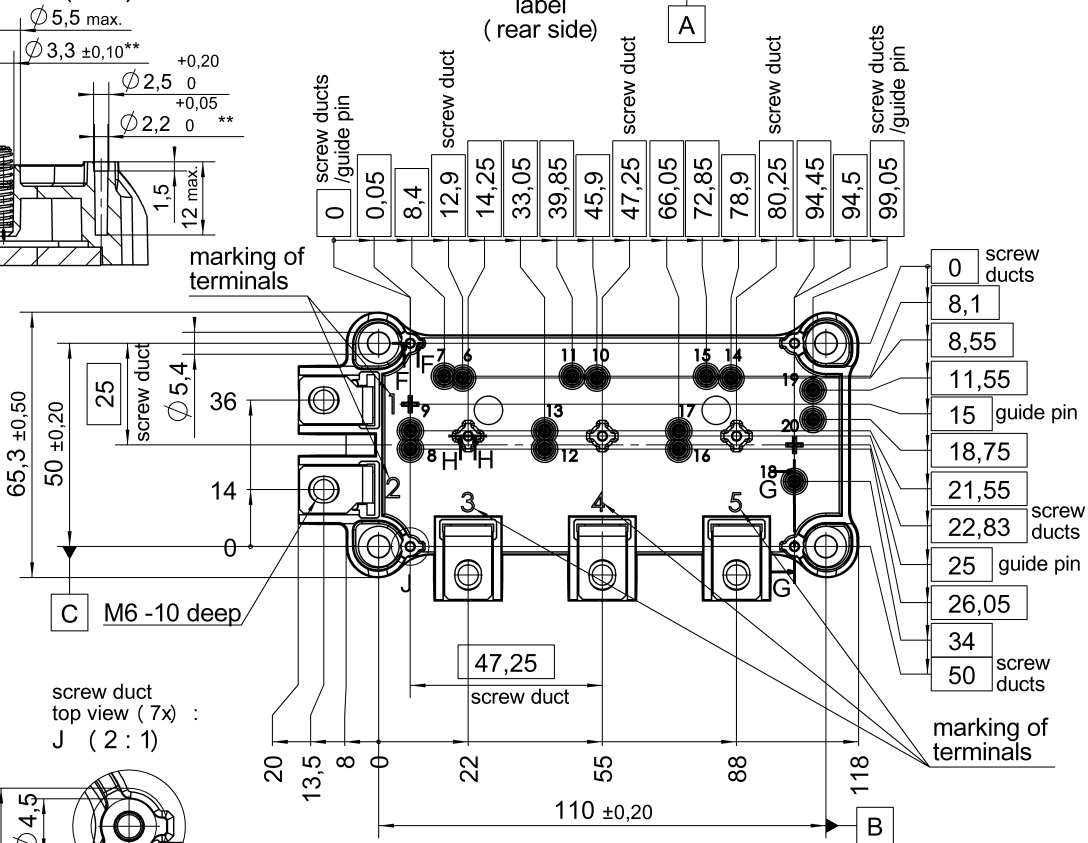


	0,3	connector 1-2 / 3-5
	0,2	each connector A

general tolerance:
 ISO 2768-mK
 ISO 8015



All measures in Z-direction valid when mounted to heat sink

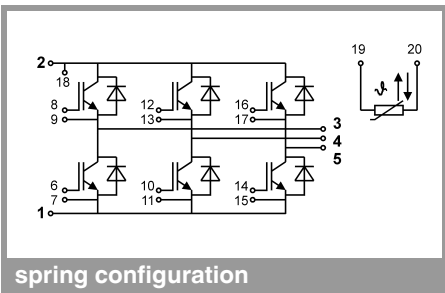


*screw duct left / top with ϕ 0,2 A B C

**screw ducts / guide pins / spring ducts with ϕ 0,2 A D C

Rules for the contact PCB:			
- holes guidepins =	ϕ 4 ±0,1 /	position tolerance	±0,1
- holes for screws =	ϕ 2,9 ±0,1 /	position tolerance	±0,1
- spring contact pad =	ϕ 3,6 ±0,1 /	position tolerance	±0,1

SEMiX 13



spring configuration

This is an electrostatic discharge sensitive device (ESDS), international standard IEC 60747-1, Chapter IX

* The specifications of our components may not be considered as an assurance of component characteristics. Components have to be tested for the respective application. Adjustments may be necessary. The use of SEMIKRON products in life support appliances and systems is subject to prior specification and written approval by SEMIKRON. We therefore strongly recommend prior consultation of our staff.